





REMEMBER, you have the option of Registering Online @ <http://www.jenswreaths.com/fundraising/> OR E-mail To: office@jenswreaths.com

Fundraiser Registration Form

Please mail to: Jen's Wreaths, 33661 State Hwy. 46, Deer River, MN 56636 or complete verbally by calling 1-218-259-9515

Your Information

Organization Name: _____

Fundraiser Coordinator Name: _____

Office Phone: _____ Home/Cell Phone: _____

Email Address: _____

Mailing Address: _____

Pick Your Program(s):

Bulk Ship (You Distribute)

____ Simple Plan

____ Fab Two Plan

____ Local-Plan

____ Deluxe Plan

Drop Ship

(Wreath is Shipped Directly To Customer)

____ Yes, I want to participate.

____ No, I do not want to participate.

Your Fundraiser Details

Number of Students Selling: _____

Our fundraising goal is to sell
_____ wreaths.

MN & Cooler Climates Need To Take Earlier Delivery

Desired delivery date: _____
(Plus or minus 3 days from this date is our target.)

Shipping Information

BULK SHIP ONLY – Check one of the following for your zone (see map):

BULK WREATHS MUST ORDER BY THE CASE SIZE. ANY ITEMS NOT ORDERED BY THE CASE HAVE A \$5 PER ITEM SURCHARGE

☐ Zone 1 ☐ Zone 2 ☐ Zone 3

☐ Local Pickup

Shipping Address **ZONE 3 MUST have Commercial Address or \$3.50 per box Residential Surcharge**

Notes:



SALES MATERIALS

All Sales Materials Can Be Downloaded Directly From:

<http://www.jenswreaths.com/fundraising>

If you experience any difficulties please contact us immediately.

PROFIT POTENTIAL – 2025 Updated Example

Be sure you fully understand that you as a club/organization choose your own retail price. Having personally sold wreaths door to door in college, I would highly recommend marking them up at least \$10 for a solid ten dollar profit per item.

EXAMPLE – BULK SHIP (Bulk Ship is when all items are shipped in 1 shipment directly to you/the club to pass out to customers.)

Let's Say you choose this price for
your club to sell your wreaths at
24" Traditional Wreath - Your Retail + \$48.00

Let's say you live in Oklahoma (see the Purple Zone 3)...
Look at the (Bulk) Shipping & Pricing page
The cost to your group is: - \$38.00

TOTAL PROFIT ----- \$10.00 per item

You must order by the case, so you'd have to order Qty. 6 of these wreaths or
there is a \$5 surcharge for any items not part of a case. Factor this into your planning & pricing!

EXAMPLE – DROP SHIP (Remember Drop Ship is when Jen's Wreaths is mailing each individual wreath directly to each customer. There is NO CASE SIZE requirement for Drop Ship!)

Let's Say you choose this price for
your club to sell your wreaths at
24" Traditional Wreath - Your Retail + \$67.00

Look at the (Drop) Shipping & Pricing page
The cost to your group is: - \$60.00

TOTAL PROFIT ----- \$7.00 per item

Jen's Wreaths 2025 ORDER TURN IN FORM

Please Email This Form To: office@jenswreaths.com - Questions? (218) 259-9515

BULK - All Wreaths Shipped to 1 COMMERCIAL Address for You To Distribute

TYPE OF WREATH	NUMBER OF ACTUAL ITEMS I SOLD	CASE SIZE FOR YOUR REFERENCE	NUMBER OF ITEMS I'm GOING TO ORDER TO MEET THE CASE SIZE <i>ACTUAL ITEMS</i> <i>SOLD / CASE SIZE & ROUND UP</i>	I'm Going to NOT order by the case & will Pay the \$5 per item extra for ordering an odd number.
----------------	-------------------------------------	------------------------------------	---	--

EXAMPLE, ROUNDING UP TO ORDER BY THE CASE	7	8	8	<--- You're Going to Pay for & Receive 8 Wreaths from Jen's Wreaths, You need to sell this extra wreath
--	----------	----------	----------	---

EXAMPLE, ORDERING ODD # & NOT ORDERING BY THE CASE	10	8	You're going to Pay for & Receive 10 Wreaths from Jen's Wreaths, 2 Wreaths Broke Case Size, so Qty. 2 x \$5 each will be surcharged = \$10 extra ----->	10
---	-----------	----------	---	-----------

24" Undecorated	8
30" Undecorated	4
36" Undecorated	1
48" Undecorated	1
18" Traditional	8
24" Traditional	6
30" Traditional	4
36" Traditional	1
48" Traditional	1
24" Plaid	6
30" Candy Cane	4
30" Cross	4
24" Door Swag	6
Wreath Hangers	N/A

OTHER MISC. (Please Specify)

Plastic Bags Are Included @ No Cost

DROP SHIP - Individual Wreaths Sent 1 in a Box As a Gift to 1 Address

OF WREATHS or HANGERS SOLD

24" Undecorated	NO CASE SIZES FOR DROP SHIP WREATHS
30" Undecorated	
18" Traditional	
24" Traditional	
30" Traditional	
24" Plaid	

30" Candy Cane	EMAIL A COPY OF EACH ORDER TO JEN's OFFICE
30" Cross	
24" Door Swag	
Wreath Hangers	
Plastic Bags Are Included @ No Cost	
OTHER MISC. (Please Specify)	

We will generate you an invoice after receiving this form.



McFadden Enterprises, LLC.,
dba: Jen's Wreaths
33661 State Hwy. 46, Deer River, MN 56636
CALL or TEXT (218)-259-9515
office@jenswreaths.com

September 2025

Dear Friends,

We are excited to serve you in 2025 & to help you meet your fundraising goal!

Jen's Wreaths is a small family-owned business in the snowy, rural northern part of Minnesota. We handcraft fresh balsam fir holiday wreaths. We harvest Minnesota Balsam Fir responsibly, keeping future generations in mind.

CHANGES FOR 2025

- **SMALL Pricing Increases** – Be sure to increase your retail selling prices.
- **Residential Delivery Addresses** reduced to \$3.50 per box surcharge. Our prices are set for delivery to a Commercial/Business address.
- **All items must be ordered by the case.**
- **All items are automatically bagged in a 1 mil poly bag to preserve freshness.**
- **The fundraising flyers and program options are the same as 2024.**
- **Minnesota and Midwest customers need to take EARLY to MID-November delivery dates so we can accommodate warmer states for LATE November and December. EVERYONE CANNOT GET THEIR WREATHS THANKSGIVING WEEK!**

ONCE AGAIN, Jen's Wreaths takes quality seriously and cares about your success. We make each wreath as fresh as possible right before your order ships. We have helpful customer service and are here to help you every step of the way.

Inside this pamphlet, you'll find an up-to-date 2025 fundraising packet. We hope you'll find the products great, the pricing competitive, and the process easy to understand.

Don't forget to REGISTER immediately to reserve your group's spot!

Sincerely,

Sam & Jenny McFadden

Celebrating 20+ years of Fresh Wreaths - Since 2004 – www.jenswreaths.com

JEN'S WREATHS

BULK SHIP FUNDRAISER PROGRAM



Text/Call 1-218-259-9515
office@jenswreaths.com



BULK SHIP = Make More \$\$\$ Per Item

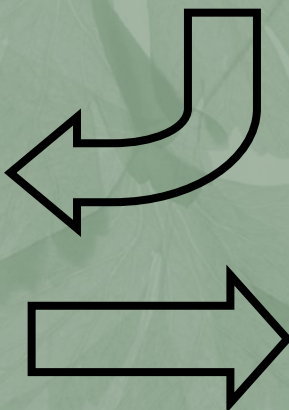
WHY? Wreaths Are Shipped in 1 Large Shipment to 1 Location for YOU to Hand Deliver



Jen's Wreaths ships ALL the wreaths directly from our farm in Minnesota to the Address provided by the Fundraising Advisor.



When the wreaths arrive, the Fundraising Advisor sorts the wreaths and distributes them to the participants for delivery.



Participants
Deliver Wreaths



Getting Started

Text/Call 1-218-259-9515
office@jenswreaths.com



Jen's Wreaths is here to help your organization meet its fundraising goals by providing you with quality balsam fir products at reasonable prices.

Selling Wreaths In 4 Easy Steps:

Step 1 PICK YOUR PROGRAM — Decide which of the programs (described on the Pick Your Program Sheet) best fits your needs. Remember, Bulk means all the wreaths are shipped to one commercial address.

Step 2 REGISTER YOUR FUNDRAISER — Register online at www.jenswreaths.com/fundraising or via paper form (Be sure you get a confirmation from our office that we received your registration.)

Step 3 BEGIN SELLING — Get your sales force ready. Contact local businesses, neighbors, friends, relatives, & co-workers. Use texts, email, and social media to share. Collect money at the time the order is placed. Periodically, we may check in with you via e-mail/phone. Do your best to communicate with us as to how you think your fundraiser is going, so we can plan accordingly.

Step 4 SUBMIT FINAL TOTALS — Fill out the ORDER TURN IN SHEET & email that sheet to office@jenswreaths.com. *****ANYTHING NOT ORDERED BY THE CASE HAS A \$5 SURCHARGE PER ITEM.*****
Make sure you get us your final order totals on time or your wreaths could be delayed! Full payment is made to Jen's Wreaths via check before your order is shipped. Credit cards can be used but 3% will be added to your order.

We strive to provide the freshest wreaths possible.

Our family keeps future generations in mind and all of our balsam fir is sustainably harvested. We also purchase all necessary permits.

To ensure optimum needle retention, we make sure that several cold nights of frost have taken place before picking any balsam fir.

We store wreaths in a cool, humidity-controlled room to prevent drying out.

We are Members and/or support each of the following Organizations, to keep us up-to-date and educated about our natural resources.



Pick Your Program



Text/Call 1-218-259-9515
office@jenswreaths.com



Jen's Wreaths has designed two different options to fit every fundraising need!
Sell 1 wreath style or offer an entire line of balsam fir products. Pick the plan that best suits your needs!

Simple Plan

Keep your fundraising easy and simple
with 1 GREAT Wreath!



*Most
Popular!*

Fab Two!

2 Great Wreaths



Local Plan

Due to the OVERSIZED Wreaths, you
must pick up the wreaths at our farm.



Deluxe Plan

Lots of Choices



All products are one-sided and made on a durable metal clamp frame.
*****Each Design Must Be Ordered By The Case*****

Deadlines & Payment

Text/Call 1-218-259-9515
office@jenswreaths.com



Payment Terms

For large orders and new customers we ask for a 25% downpayment, immediately upon submitting your final totals. The entire balance of the order must be paid for before it leaves our shop. Please plan ahead if your school/organization requires a lengthy payment process. Mail a check or there is a 3% fee for credit cards.

Order Deadlines

To be certain that your order will arrive on time, please use the deadlines below. Orders need to be e-mailed to our office using the FINAL TOTAL SHEET. Be sure you get a REPLY from us and invoice within 24 hours.

Delivery Date

WE CANNOT GUARANTEE YOUR ORDER WILL ARRIVE ON A SPECIFIC DATE! —> We need a 3-day window. Orders turned in LATE could be delayed. Upon receiving your registration, we will put you on our shipping calendar and assign a date (we will try to get as close to your preferred date as possible). We consider delivery the day before or the day after your preferred date acceptable. Sometimes Jen's Wreaths has more staff on a given day than expected, employees get sick and we may be forced to ship when we have the help. 1-3 day delays that are out of our control happen due to snow/ice. Flexibility is a must. We often see multi-piece orders separated in transit with 1/2 arriving one day and 1/2 the next. Please ask for your wreaths to arrive several days early, if a certain delivery date is very important.

<u>Want Delivery This Week?</u>	<u>Turn in Final Totals By:</u>
October 27th—October 31st	October 17th
November 3rd — 7th	October 21st
November 10th - 14th	October 28th
November 17th - 21st	November 3rd
November 24th - 28th (Thanksgiving Week)	November 10th
December 1st - 5th	November 17th
December 8th — 12th	November 25th

We Accept:



+3% FEE on all Credit Cards



Pricing 2025

(Shipping Included)

Text/Call 1-218-259-9515
office@jenswreaths.com



Bulk Program Price - All Wreaths are Shipped to 1 Address for you @ a COMMERCIAL ADDRESS to Distribute

	Undecorated				Traditional					Plaid	Cross or Candy Cane	Door Swag
Diameter	24"	30"	36"***	48"***	18"	24"	30"	36"***	48"***	24"	30"	24"

Suggested Retail Prices - The Range of Prices Represent What Past Fundraisers Have Charged Their Customers

Suggest-	\$35-\$45	\$40-\$65	\$55-\$150	\$80-\$300	\$35-\$45	\$39-\$55	\$46-\$70	\$56-\$150	\$80-\$300	\$39-\$55	\$39-\$55	\$37-\$50
----------	-----------	-----------	------------	------------	-----------	-----------	-----------	------------	------------	-----------	-----------	-----------

ALL ITEMS MUST BE ORDERED BY THE CASE

CASE SIZE	8 wreaths	4 wreaths	1 wreath	1 wreath	8 wreaths	6 wreaths	4 wreaths	1 wreath	1 wreath	6 wreaths	4 Cross OR 4 Canes	6 Swags
Local Pick-Up @ Jen's, Twine	\$26 each x 8 in case = \$208	\$30 each x 4 in case = \$120	\$40 each x 1 in case = \$40	\$52 each x 1 in case = \$52	\$27 each x 8 in case = \$216	\$29 each x 6 in case = \$174	\$36 each x 4 in case = \$144	\$46 each x 1 in case = \$46	\$60 each x 1 in case = \$60	\$29 each x 6 in case = \$174	\$29 each x 4 in case = \$116	\$27 each x 6 in case = \$162
Local Pick-Up @ Jen's, Boxed	\$27 each x 8 in case = \$216	\$31 each x 4 in case = \$124	\$58 each x 1 in case = \$58	\$79 each x 1 in case = \$79	\$28 each x 8 in case = \$224	\$30 each x 6 in case = \$180	\$37 each x 4 in case = \$148	\$64 each x 1 in case = \$64	\$90 each x 1 in case = \$90	\$30 each x 6 in case = \$180	\$30 each x 4 in case = \$120	\$28 each x 6 in case = \$168

2025 ---> ANY ITEMS NOT ORDERED BY THE CASE WILL BE SURCHARGED \$5 extra PER ITEM, INCREASE YOUR SELLING PRICE

Zone 1	\$30 each x 8 in case = \$240	\$38 each x 4 in case = \$152	\$66 each x 1 in case = \$66	\$193 ea. x 1 in case = \$193	\$30 each x 8 in case = \$240	\$34 each x 6 in case = \$204	\$43 each x 4 in case = \$172	\$74 each x 1 in case = \$74	\$202 ea. x 1 in case = \$202	\$34 each x 6 in case = \$204	\$34 each x 4 in case = \$136	\$33 each x 6 in case = \$198
Zone 2	\$32 each x 8 in case = \$256	\$40 each x 4 in case = \$160	\$70 each x 1 in case = \$70	\$217 ea. x 1 in case = \$217	\$31 each x 8 in case = \$248	\$35 each x 6 in case = \$210	\$45 each x 4 in case = \$180	\$74 each x 1 in case = \$74	\$226 ea. x 1 in case = \$226	\$35 each x 6 in case = \$210	\$35 each x 4 in case = \$140	\$34 each x 6 in case = \$204

ALL ZONE 3 Customer's Must Ship to A Commerical / Business Address or UPS/FED-EX charges \$3.50 extra per box which we will bill you.

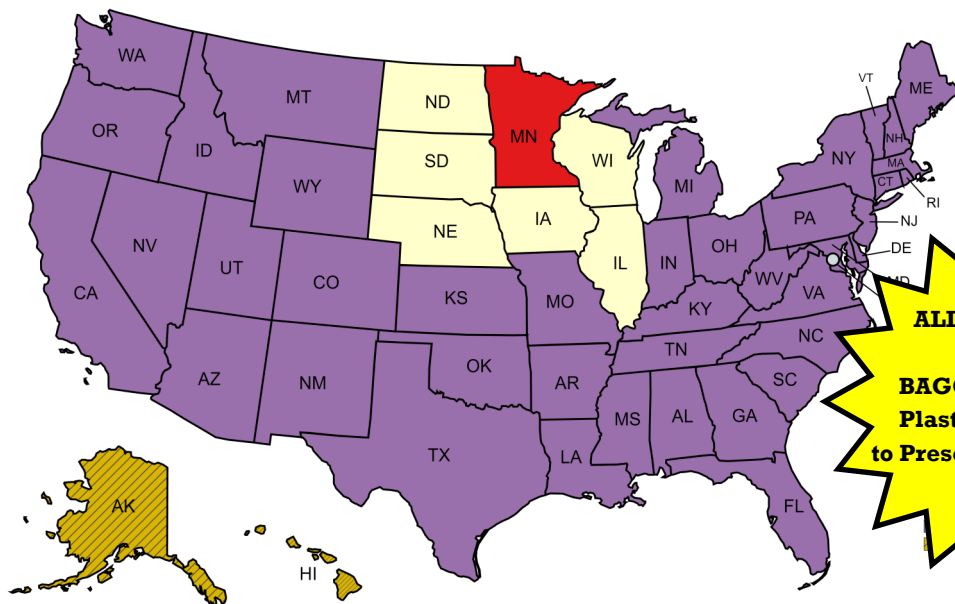
Zone 3	\$34 each x 8 in case = \$272	\$46 each x 4 in case = \$184	\$110 ea. X 1 in case = \$110	\$240 ea. x 1 in case = \$240	\$34 each x 8 in case = \$272	\$38 each x 6 in case = \$228	\$50 each x 4 in case = \$200	\$117 ea. x 1 in case = \$117	\$252 ea. x 1 in case = \$252	\$38 each x 6 in case = \$228	\$38 each x 4 in case = \$152	\$35 each x 6 in case = \$210
--------	-------------------------------	-------------------------------	-------------------------------	-------------------------------	-------------------------------	-------------------------------	-------------------------------	-------------------------------	-------------------------------	-------------------------------	-------------------------------	-------------------------------

Add-On Items

-> METAL 12"-15" Wreath Hanger **\$2.75 each**
New Supplier & Colors Vary (FREE SHIPPING)

ALL WREATHS ARE BAGGED in 1 mil Plastic Poly Bags to Preserve Freshness

***These oversized fee items are only a part of the local fundraising program. The pricing is included for your convenience in the event you get a special request. Big Businesses & Ranches will buy these big wreaths, be sure to mark them up so your group makes a profit.



Shipping Details



Text/Call 1-218-259-9515
office@jenswreaths.com



Shipping Costs, ALL Wreaths Bagged, Hangers & Bows:

Shipping is already included in the price of each item/case. We changed vendors for door hangers and the color likely will be bronze or green. We can't guarantee color. All wreaths now come automatically bagged for no additional fee. If we run out of a bow, berry, etc., a substitute will be used.

Shipping Carriers:

Spee-Dee Delivery Service will be used for Midwest addresses in ZONE 1 & 2. Fedex or UPS will be used for ZONE 3. We reserve the right to change carriers at any time due to unforeseen price increases or frequent delays with certain carriers.

Local Pick-Ups @ Our Farm:

If you live within driving distance of our farm, you are always welcome to pick up your wreaths at our Deer River, MN location and avoid any shipping charges. We live and work here so can usually accommodate most pick-up times including weekends and late at night. You would pay the Local Pick-Up @ Jen's Wreaths prices. Local Customers can choose to for their wreaths to be bundled with twine or pay extra for boxes.

Please bring adequate tie down straps.

Fedex/UPS Surcharges Zone 3 – Residential vs Commercial:

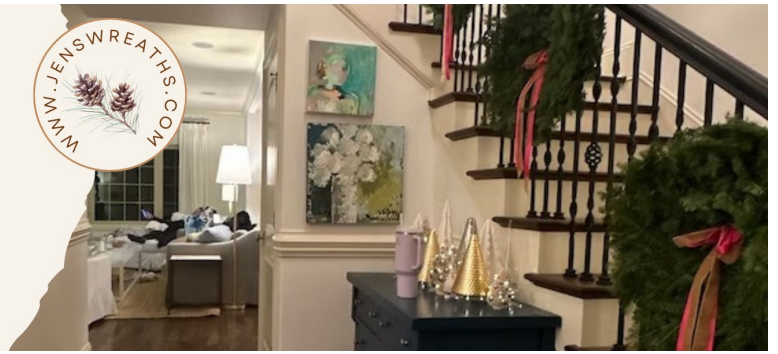
All prices are based upon delivery to a business/commercial address. We are still able to send items directly to the fundraiser director's home etc. However, we incur surcharges for each box shipped to a residential address. If you chose to send the shipment to your personal house/residential address we will pass along the \$3.50 per box that Fed-Ex/UPS charges us to you.

\$5 SURCHARGE ENFORCED, NO Exceptions

We started case sizes 2 years ago. I realize it's harder but it significantly reduces employee time, counting and re-counting boxes which translates into wages saved. We want our groups to make as much money as possible to meet their goals and cases keep our prices lower. Plan to sell a few more wreaths after you turn in those final totals to sell the extras in your cases.

RAISE YOUR RETAIL/SELLING PRICE

Take time and do the math. Costs are up slightly. Please RAISE your selling prices a little bit. Double check our 2025 Pricing page against your Selling Price.



CHECK YOUR RETAIL PRICES & BE SURE YOU ARE MAKING ENOUGH PROFIT TO MEET YOUR ORGANIZATION'S GOALS!

Wreath **FUNDRAISER**

HANDCRAFTED FROM
MINNESOTA BALSAM FIR



24" TRADITIONAL WREATH



WREATH
HANGER

Colors May Vary

YOUR WREATH PURCHASE WILL BENEFIT:

FOR MORE INFORMATION, CALL:

Wreath **FUNDRAISER**

HANDCRAFTED FROM
MINNESOTA BALSAM FIR



24" TRADITIONAL WREATH

\$48.00



WREATH
HANGER

\$4.00

Colors May Vary

YOUR WREATH PURCHASE WILL BENEFIT:

FOR MORE INFORMATION, CALL:

Thank You for Your Support! Please Make Checks Payable to:

Name: _____ Phone #: _____	24" Traditional Wreath	Wreath Hanger
	\$	\$

Customer Name	Address	Phone #	Quantity	Quantity

Wreath FUNDRAISER

HANDCRAFTED FROM
MINNESOTA BALSAM FIR



24"
TRADITIONAL
WREATH

\$



24"
PLAID
WREATH

\$



WREATH
HANGER

\$4.00

Colors May Vary

YOUR WREATH PURCHASE WILL BENEFIT:

FOR MORE INFORMATION, CALL:

Wreath **FUNDRAISER**

HANDCRAFTED FROM
MINNESOTA BALSAM FIR



24"
TRADITIONAL
WREATH

\$48.00



24"
PLAID
WREATH

\$ 48.00



WREATH
HANGER

\$4.00

Colors May Vary

YOUR WREATH PURCHASE WILL BENEFIT:

FOR MORE INFORMATION, CALL:

Thank You for Your Support! Please Make Checks Payable to:

Name: _____

Phone #: _____

24"
Traditional
Wreath

24" Plaid Wreath

**Wreath
Hanger**

\$

\$

Customer Name

Address

Phone #

Quantity

Quantity

[illegible]

Wreath FUNDRAISER

HANDCRAFTED FROM
MINNESOTA BALSAM FIR



TRADITIONAL WREATHS

24" -

30" -

36" -

48" -



WREATH
HANGER

Colors May Vary

YOUR WREATH PURCHASE WILL BENEFIT:

FOR MORE INFORMATION, CALL:

Wreath FUNDRAISER

HANDCRAFTED FROM
MINNESOTA BALSAM FIR



TRADITIONAL WREATHS

24" - \$39.00

30" - \$49.00

36" - \$59.00

48" - \$79.00



WREATH
HANGER

\$4.00

Colors May Vary

YOUR WREATH PURCHASE WILL BENEFIT:

FOR MORE INFORMATION, CALL:

Thank You for Your Support! Please Make Checks Payable to:

Name: _____ Phone #: _____	24" Traditional Wreath	30" Traditional Wreath	36" Traditional Wreath	48" Traditional Wreath	Wreath Hanger
	\$				\$

Customer Name	Address	Phone #	Quantity				Quantity

Wreath FUNDRAISER

HANDCRAFTED FROM
MINNESOTA BALSAM FIR



TRADITIONAL WREATHS

18" - \$

24" - \$

30" - \$



WREATH
HANGER

Colors May Vary

UNDECORATED



24" - \$

30" - \$

CROSS



\$

CANDY CANE



\$

SWAG



\$

PLAID WREATH



24"

\$

YOUR WREATH PURCHASE WILL BENEFIT:

FOR MORE INFORMATION, CALL:

Wreath FUNDRAISER

HANDCRAFTED FROM
MINNESOTA BALSAM FIR



TRADITIONAL WREATHS

18" - \$ 44.00

24" - \$ 48.00

30" - \$ 60.00



WREATH
HANGER

\$4.00

Colors May Vary

UNDECORATED



24" - \$44.00

30" - \$56.00

CROSS



\$48.00

CANDY CANE



\$48.00

SWAG



\$45.00

PLAID WREATH



24"
\$48.00

YOUR WREATH PURCHASE WILL BENEFIT:

FOR MORE INFORMATION, CALL:

Thank You for Your Support! Please Make Checks Payable to:

Name: _____ Phone #: _____			Traditional Wreath			Undecorated Wreath		Plaid Wreath	Cross	Door Swag	Candy Cane	Wreath Hanger
			18"	24"	30"	24"	30"	24"	30"	24"	30"	
			\$	\$	\$	\$	\$	\$	\$	\$	\$	
Customer Name			Address			Phone #			Enter Quantity			

JEN'S WREATHS

Drop Ship Program



Text/Call 1-218-259-9515
office@jenswreaths.com



DROP SHIP = Less Hassle

WHY? Wreaths Are Shipped INDIVIDUALLY (1 Per Box) to Each Separate Customer's Address

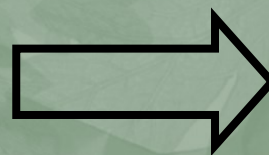


Jen's Wreaths Ships **EACH** wreath directly from our Farm in Minnesota to **EACH** individual customer.

We include custom gift messages for gifts.



NO HASSLE - Fed-Ex/UPS/USPS/Spree-Dee will deliver the wreath directly to your customer's (or the gift recipient's) front door!



Jen's Wreaths - Address: 33661 State Highway 46, Deer River, MN 56636 - Email: office@jenswreaths.com
www.jenswreaths.com/fundraising - Phone: (218)-259-9515

DropShip Tidbits

Text/Call 1-218-259-9515
office@jenswreaths.com



The Dropship option is best described as an extension or add-on to the bulk program.

You could do it as a stand alone program
but it works best alongside the bulk delivery option

- ⇒ **Whatever program you choose for bulk delivery is the same you use for the drop ship program. Read the entire Bulk Delivery pamphlet.**
- ⇒ **When you register let us know if you are also doing the Drop Ship program option.**
- ⇒ **When you sell, look for business owners and folks who want their wreath shipped directly to a client or loved one.**
- ⇒ **The same order deadlines, payment options and totals need to be submitted as detailed in the Bulk Delivery pamphlet.**
- ⇒ **EXCEPT —> I NEED A COPY OF THE ORDER FORMS - SCAN THEM EMAIL THEM ALL TO office@jenswreaths.com WITH A SUMMARY. THERE SHOULD BE **20** orders here so we can be sure we received everything.**
- ⇒ **Generally the profit is less on the Drop Ship Program but it is easier for you because you don't have to complete the delivery. UPS/Speed-Dee, etc., makes the delivery for you.**

Dropship Pricing & Shipping

Text/Call 1-218-259-9515
office@jenswreaths.com



The Wreath & The Shipping Cost Is Included In This Price

	Undecorated		Traditional			Plaid	Cross or Candy Cane	Door Swag
	24"	30"	18"	24"	30"	24"	30"	24"
This program has a set profit per item of \$7.00. For every drop ship item you sell your club gets \$7.00.								
Drop Ship = All Wreaths are Shipped Individually To Each Separate Customer's Address This is the Amount you pay Jen's Wreaths per Item. You profit \$7 per item, You Sell The Item for \$7 more.								
Drop Ship Your Cost -	\$56	\$64	\$48	\$60	\$70	\$60	\$60	\$52

SAVE \$5 OFF THE ABOVE COSTS TO THESE STATES—MN, WI, ND, SD, IA, NE, IL, MO, KS

Example: 24" Traditional Wreath Shipped to Fargo, ND—ND is one of the reduced states above

You Charge the Customer \$67.00—\$60.00 (Cost Above) - \$5 extra being in a reduced price state

= \$55 owned to Jen's Wreaths

Your Club Makes a \$7 Profit on Every Item & The Retail Price On The Selling Forms Are Set For \$7

WE DO NOT SHIP TO ALASKA or HAWAII

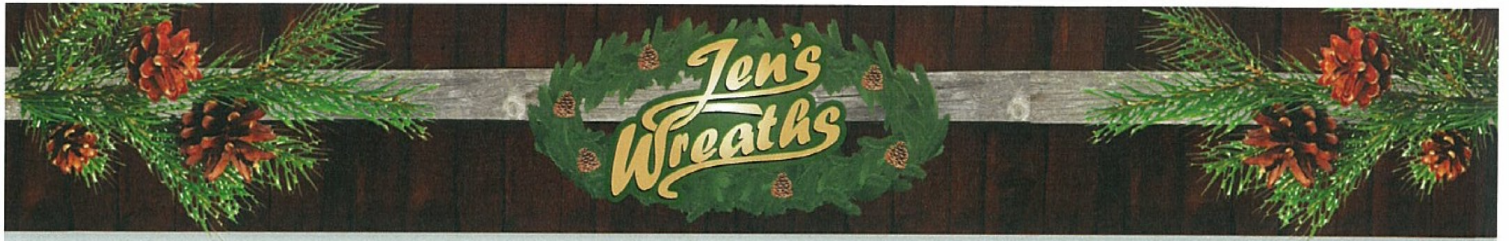
WE ALSO CANNOT SHIP TO PO BOX's (We have to have the STREET Address)!

About Shipping:

Shipping, boxes, and packing material are included in the price of each item. Each item is shipped via Spee-Dee or UPS to the address on the order form along with a gift card.

Regarding Order Forms:

Please make sure that all the information including phone numbers are filled out on the order form. Keep a copy of each individual order form in your files and e-mail a copy of each order form to Jen's Wreaths. Also, please make sure the form is legible.



Drop Ship Order Form

Seller's (Organization's) Name: _____

Check Wreath Style Being Purchased

Simple Program

_____ 24" Traditional Wreath shipped to Lower 48 States @ \$67.00 each

_____ Wreath Hanger @ \$5.00 each

We use a combination of Fed-Ex, UPS & Spee-Dee for delivery.

We no longer ship to PO BOX's, Alaska or Hawaii.

Sender Information - (Purchaser of Wreath)

Name: _____

Address: _____

City/State/Zip: _____

Phone Number: _____

Additional Phone Number or Email: _____

Gift Message:

Recipient - Send to:

We CANNOT SHIP TO PO BOX's OR ALASKA/HAWAII.

PLEASE USE THE STREET ADDRESS.

Name: _____

Address: _____

City/State/Zip: _____

Phone (Optional - Asked for by Fex-Ex in case of delivery issues): _____



Drop Ship Order Form

Seller's (Organization's) Name: _____

Check Wreath Style Being Purchased

Simple Program

_____ 24" Traditional Wreath shipped to Lower 48 States @ \$67.00 each

_____ 24" Plaid Wreath shipped to the Lower 48 States @ \$67.00 each

_____ Wreath Hanger @ \$5.00 each



We use a combination of Fed-Ex, UPS & Spee-Dee for delivery.

We no longer ship to PO BOX's, Alaska or Hawaii.

Sender Information - (Purchaser of Wreath)

Name: _____

Address: _____

City/State/Zip: _____

Phone Number: _____

Additional Phone Number or Email: _____

Gift Message:

Recipient - Send to:

We CANNOT SHIP TO PO BOX's OR ALASKA/HAWAII.

PLEASE USE THE STREET ADDRESS.

Name: _____

Address: _____

City/State/Zip: _____

Phone (Optional - Asked for by Fex-Ex in case of delivery issues): _____



Drop Ship Order Form

Seller's (Organization's) Name: _____

Check Wreath Style Being Purchased

Simple Program

_____ 18" Traditional Wreath shipped to Lower 48 States @ \$55.00 each

_____ 24" Traditional Wreath shipped to the Lower 48 States @ \$67.00 each

_____ 30" Traditional Wreath shipped to the Lower 48 States @ \$77.00 each

_____ Wreath Hanger @ \$5.00 each

We use a combination of Fed-Ex, UPS & Spee-Dee for delivery.

We no longer ship to PO BOX's, Alaska or Hawaii.

Sender Information - (Purchaser of Wreath)

Name: _____

Address: _____

City/State/Zip: _____

Phone Number: _____

Additional Phone Number or Email: _____

Gift Message:

Recipient - Send to:

We CANNOT SHIP TO PO BOX's OR ALASKA/HAWAII.

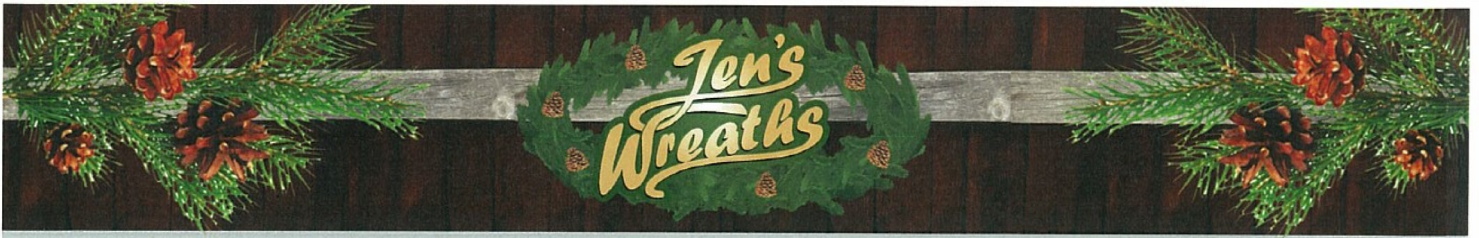
PLEASE USE THE STREET ADDRESS.

Name: _____

Address: _____

City/State/Zip: _____

Phone (Optional - Asked for by Fex-Ex in case of delivery issues): _____



Drop Ship Order Form

Seller's (Organization's) Name: _____

Check Wreath Style Being Purchased – Deluxe Program

_____ 18" Traditional Wreath shipped to Lower 48 States @ \$55.00 each

_____ 24" Traditional Wreath shipped to Lower 48 States @ \$67.00 each

_____ 30" Traditional Wreath shipped to Lower 48 States @ \$77.00 each

_____ 24" Undecorated Wreath shipped to Lower 48 States @ \$63.00 each

_____ 30" Undecorated Wreath shipped to Lower 48 States @ \$71.00 each

_____ 24" Plaid Wreath shipped to Lower 48 States @ \$67.00 each

_____ 30" Cross shipped to Lower 48 States @ \$67.00 each

_____ 30" Candy Cane shipped to Lower 48 States @ \$67.00 each

_____ 24" Door Swag shipped to Lower 48 States @ \$59.00 each

_____ Wreath Hanger @ \$5.00 each

We use a combination of UPS & Spee-Dee for delivery.

We do not ship to PO BOX's, Alaska or Hawaii.

Sender Information - (Purchaser of Wreath)

We CANNOT SHIP TO PO BOX's OR ALASKA/HAWAII.

PLEASE USE THE STREET ADDRESS.

Name: _____

Address: _____

City/State/Zip: _____

Phone Number: _____

Additional Phone Number or Email: _____

Gift Message:

Recipient - Send to:

We CANNOT SHIP TO PO BOX's OR ALASKA/HAWAII.
PLEASE USE THE STREET ADDRESS.

Name: _____

Address: _____

City/State/Zip: _____

Phone (Optional - Asked for by Fex-Ex in case of delivery issues):

Gift Message:

Recipient - Send to:

Name: _____

Address: _____

City/State/Zip: _____

Phone (Optional - Asked for by Fex-Ex in case of delivery issues):

Gift Message:

Recipient - Send to:

Name: _____

Address: _____

City/State/Zip: _____

Phone (Optional - Asked for by Fex-Ex in case of delivery issues):

Gift Message:

Recipient - Send to:

Name: _____

Address: _____

City/State/Zip: _____

Phone (Optional - Asked for by Fex-Ex in case of delivery issues):

Gift Message:

Recipient - Send to:

Name: _____

Address: _____

City/State/Zip: _____

Phone (Optional - Asked for by Fex-Ex in case of delivery issues):
